

# CAM Express – Mill-turn Machining

## fact sheet

Siemens PLM Software

[www.siemens.com/plm/camexpress](http://www.siemens.com/plm/camexpress)

### ► Summary

CAM Express software is an in-depth, highly flexible system that allows users to maximize the value of their investments in the latest, most efficient and most capable machine tools. The Mill-turn Machining package has all the components needed to effectively program multi-function equipment like mill-turn combination machines. Multi-turret and multi-spindle turning centers can be easily synchronized, with full visualization and timing comparisons.

### Benefits

- Easy to use
- Easy to deploy
- Low cost of ownership
- Work with any CAD data
- Integrated system puts verification and simulation in the programming environment
- Postprocessor integrated and accessible to user
- Multi-channel machining supports multi-function turning centers

### Features

- Single in-process workpiece between milling and turning
- Full tool library
- Machining data libraries
- Flexible operation navigator
- Shop documentation

### Synchronization

Harness the power of multi-function machine tools with a graphical means of displaying an unlimited number of channels, with scrolling code in a choice of formats, time displays and with functions to add wait and sync codes. The Synchronization Manager is directly linked to the internal postprocessor and runs from posted output for the greatest accuracy.

### Machining simulation

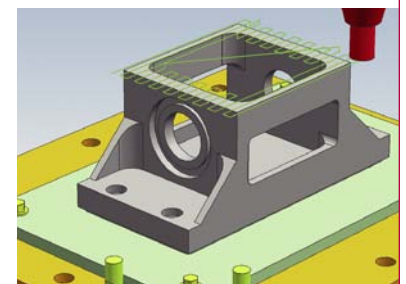
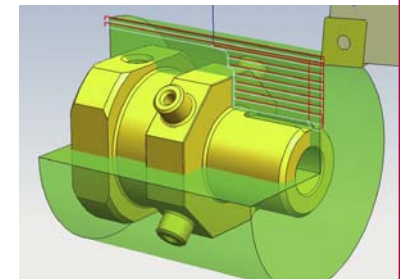
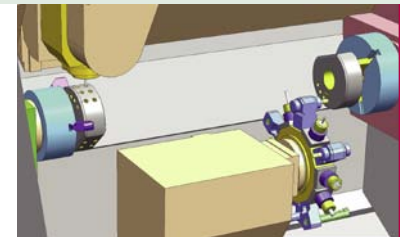
Avoid tying up a machine in unproductive prove-outs with the integrated machine tool simulation in CAM Express. It provides a more complete simulation than most systems with its machine code driven motion. Special tools are provided to build complete kinematic machine tool models.

### Turning

CAM Express provides a complete solution that is easy enough to use on simple programs and capable enough to tackle your toughest geometry in multi-spindle, multi-turret applications.

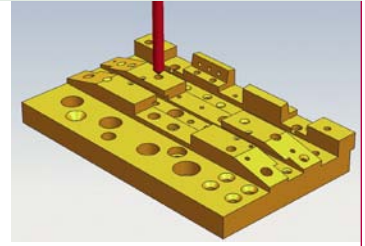
### 2½-axis milling

2½-axis roughing patterns can be applied based on basic boundary data or solid geometry. Zigzag, offset and plunge milling are examples of the toolpaths provided. High-speed roughing toolpaths such as trochoidal are available here. Feature-based machining functions automate the identification and programming of slots and faces.



### Drilling

CAM Express addresses drilling, reaming, boring, tapping, peck drilling and custom cycles. Automated hole making is available with the feature-based machining options.

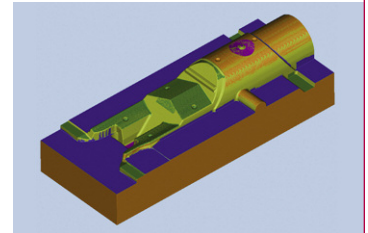


### Comprehensive foundation –

**CAM Express includes extensive support functions that add substantial value**

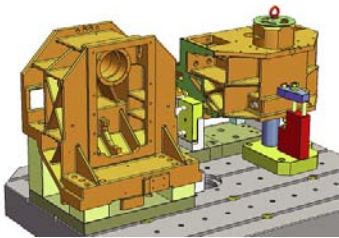
### Toolpath verification

Features dynamic pan and zoom during playback and visual display of material removal.



### Geometry modeling and translation

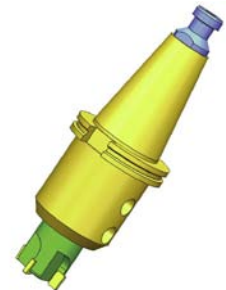
CAM Express includes basic geometry creation and a collection of standard translators. Use the assembly modeling tools to assemble a detailed machine environment or to position parts and fixtures.



### Libraries

Tools, machines, cutting parameters, templates and posts are all organized for effective re-use and easy selection.

Machining parameter data is automatically drawn from the library as operations are created.

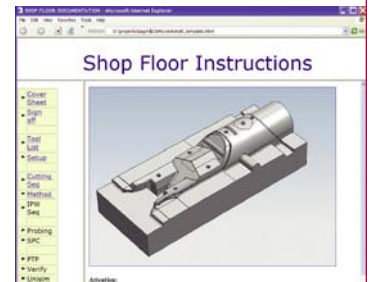
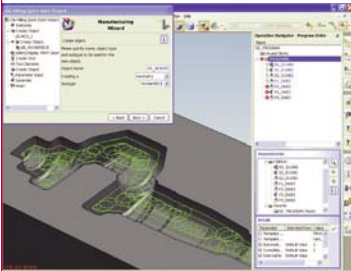


### Wizards

CAM Express comes with the drag-and-drop wizard builder.

### Integrated postprocessing

CAM Express includes a graphical post builder capability. Simple menu selections are all that is needed to build or edit a postprocessor. CAM Express automatically generates shop documentation, including setup sheets, operations sequence information and tool lists.



### Contact

Siemens PLM Software

Americas 800 807 2200

Europe 44 (0) 1202 243455

Asia-Pacific 852 2230 3308

[www.siemens.com/plm](http://www.siemens.com/plm)

# SIEMENS