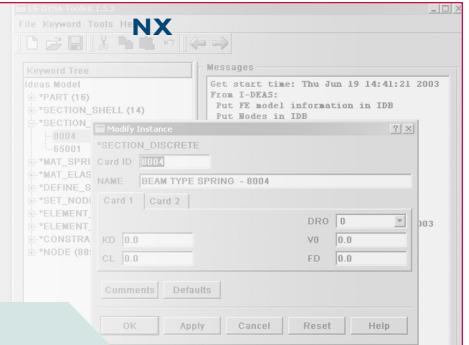


# LS-DYNA data translator for NX I-deas

## Facilitating data exchange and sharing to/from NX I-deas



### fact sheet

Siemens PLM Software

[www.siemens.com/plm](http://www.siemens.com/plm)

#### ► Summary

LS-DYNA data translator provides an interface between LS-DYNA and NX® I-deas® software (NX MasterFEM) digital simulation, facilitating the exchange and sharing of product data. Keywords are translated to their equivalent finite element (FE) entity on import. On export, NX I-deas FE entities are written to the corresponding keyword. LS-DYNA data translator provides a form-based environment to help you prepare a model for translation to and from NX I-deas, or to make modifications in the LS-DYNA deck. The current version of the LS-DYNA data translator supports LS-DYNA Version 960 and earlier.

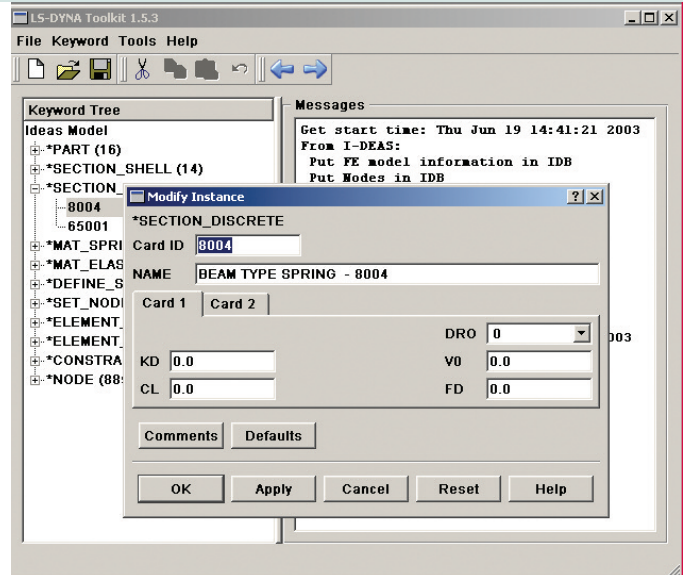
#### Benefits

- Shorten model preparation time
- Reduce errors caused by manual data entry

#### Features

- Exports NX I-deas FE models to LS-DYNA keyword files
- Imports LS-DYNA keyword files to NX I-deas Simulation

The LS-DYNA data translator for NX I-deas allows for keywords and keyword instances to be laid out in a data tree with branches that expand and collapse, making management and editing of content simple and efficient. During keyword instance editing, you can select FE entities from the NX I-deas graphics region. These features shorten model preparation time and reduce errors caused by manual data entry.



#### Export/import capabilities

LS-DYNA export capabilities include:

- Creation of complete finite element models
- Generation of LS-DYNA sets, loads and boundary conditions
- Preparation of ready-to-run LS-DYNA keyword files for vehicle safety analysis

LS-DYNA import capabilities include:

- Complete LS-DYNA finite element models
- Support of both block and fixed format keyword file(s)
- Option to process "include" files
- Direct importing of LS-DYNA keyword data into NX I-deas (no generation of intermediate files)

#### Productivity tools

**Mapping tool.** The mapping tool enables you to decrease your keyword file building time by replacing data in certain keyword instances in the current keyword file with data from matching keyword instances in an external keyword file. Mapping works for the following keywords: part, section and mat.

**Merging tool.** With the merging tool, you can control how the keyword instances in a source file, or those being exported from NX I-deas, are added to the current keyword file. The tool is flexible, allowing you to merge all keywords or select a subset of keywords to merge.

### Technical specifications

**Supported keyword instances.** All LS-DYNA keyword instances are supported. Two levels of support exist: basic text editing and full form editing.

- Airbag
- Ale
- Boundary
- Component
- Constrained
- Contact
- Control
- Damping
- Database
- Define
- Deformable\_to\_rigid
- Element
- EOS
- Hourglass
- Include\_{option}
- Initial
- Integration
- Interface
- Load
- Mat
- Node
- Part
- Rigid wall
- Section
- Set
- Termination
- Title
- Translate
- User

### Computing platforms

LS-DYNA data translator is supported on HP, Sun, IBM and SGI UNIX and Windows 2000/NT hardware platforms. Visit [http://support.ugs.com/online\\_library/certification/](http://support.ugs.com/online_library/certification/) for additional system configuration information.

### Prerequisites

NX MasterFEM (NX I-deas digital simulation modeling set)



### Contact

Siemens PLM Software

Americas 800 498 5351

Europe +44 (0) 1276 702000

Asia-Pacific 852 2230 3333

[www.siemens.com/plm](http://www.siemens.com/plm)