

## Teamcenter integration for Pro/Engineer

Capture, manage and share Pro/Engineer data in a cPDM environment

### fact sheet

Siemens PLM Software

[www.siemens.com/teamcenter](http://www.siemens.com/teamcenter)

#### ► Summary

Teamcenter® software's integration for Pro/Engineer enables you to manage, control and share Pro/Engineer data with your product development team and supply chain participants in a cPDM environment. This environment provides you with a single view to your product requirements, engineering processes, product data, supply chain participants, manufacturing processes and project schedules and resources.

#### Benefits

Less time spent by your technical staff in finding the correct revisions of Pro/Engineer data

Consistent work process followed across all data formats

Faster product change and approval processes resulting in decreased time-to-market

Pro/Engineer files integrated with all of your technical data to provide a single source of product information that supports your complete design-through-manufacturing process

#### Features

Use Teamcenter functions from the Pro/Engineer interface

Create and edit Pro/Engineer models, drawings and assembly relationships

Perform partial load and load merge for efficient assembly management

Create new product revisions or version updates for work in progress

Generate drawing title blocks using Teamcenter attributes

Manage mechanical properties of Pro/Engineer models and assemblies

Provide on-demand access to the user's Teamcenter workplace

Teamcenter's integration for Pro/Engineer enables all the design information created in Pro/Engineer to be captured, controlled and shared by your organization in a single, highly secure cPDM environment. This environment provides version management and access controls to ensure that the right people get the right information at the right time.

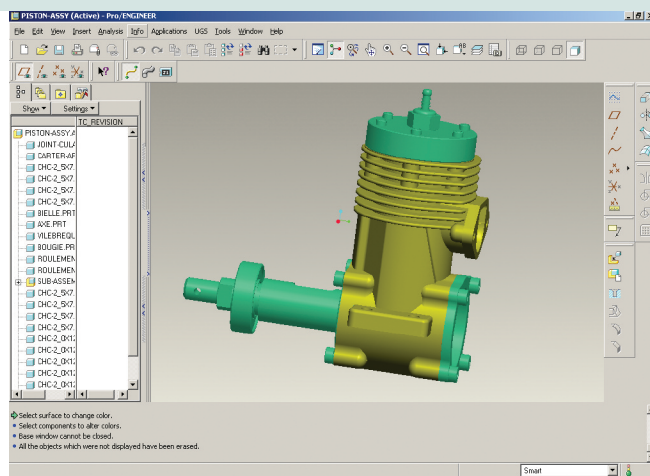
Using this integration, design teams can quickly search and access Pro/Engineer parts, assemblies and drawings to eliminate time wasted trying to find and share design information, while reducing change orders by making certain that everyone is working from the latest design information.

The capabilities go beyond workgroup CAD data management, enabling design teams at different locations and through your supply chain to work closely together to streamline the product development process through multi-site collaboration.

#### Extend the value of Pro/Engineer with Teamcenter

**Everyday task and process management.** Teamcenter delivers a cPDM environment that is focused on managing everyday tasks and processes for design through manufacturing. Industry best practice workflows for product release and engineering change are included to ensure that these processes are conducted consistently and efficiently.

**Multi-CAD collaboration.** Teamcenter's multi-CAD support enables design teams to create and modify component designs on any major CAD system, and assemble their innovations into a multi-CAD product design. Teamcenter synchronizes product information to make certain that everyone is working from the latest designs while automatically managing both native and neutral CAD representations.



### Supported Pro/Engineer items

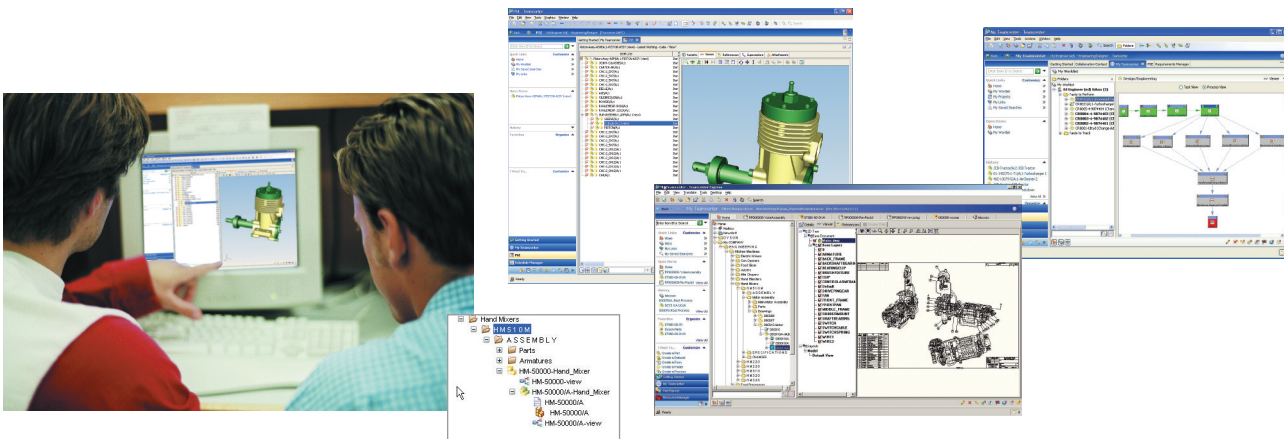
- Assemblies
- Diagrams
- Drawings
- Formats
- Layouts
- Manufacturing
- Markups
- Parts
- Reports
- Sections

### Integration for Pro/Engineer – supported functions

- Load – new existing to create an assembly
- Save – as a new revision, new version, new assembly or individual items
- Save assembly – as a new revision, new version, new assembly or to create new items
- Synchronize title block using Teamcenter database attributes
- Create, configure and edit assemblies using Teamcenter and/or Pro/Engineer
- Automatically generate and vault lightweight visualization (JT) files for digital mockup
- Save mechanical properties including volume, weight, surface area, moments of inertia
- Work with multiple Pro/Engineer sessions
- Store, load and migrate Pro/Intralink and Pro/PDM data
- Access Teamcenter workspace and functions such as search and retrieve, where used, check-in/check-out, view and workflow
- Provide support for:
  - Simplified representation
  - Family tables
  - Full or partial structure duplication (assembly “done”)
  - Bulk data import and export
  - Filter by data types to control volume of files delivered to the client
  - Seed parts
  - Rename
  - CAD-centric transfer of ownership between federated sites

### Teamcenter advantage

Teamcenter is the world's most widely deployed PLM system and is backed by Siemens PLM Software's leadership in delivery. Users of Teamcenter can easily expand the scope of their cPDM implementation by taking advantage of Teamcenter's comprehensive portfolio of applications and its proven scalability in terms of performance and global implementation.



### ► Contact

Siemens PLM Software

Americas 800 498 5351  
 Europe 44 (0) 1276 702000  
 Asia-Pacific 852 2230 3333

[www.siemens.com/plm](http://www.siemens.com/plm)

**SIEMENS**