

Solid Edge Embedded Client

Capture, manage and share Solid Edge data using Teamcenter

fact sheet

Siemens PLM Software

www.siemens.com/teamcenter

► Summary

Solid Edge® software's Embedded Client (SEEC) sets the standard for CAD/PDM integration, enabling you to reduce product development cycle times and costs by seamlessly connecting Solid Edge with Synchronous Technology to Siemens PLM Software's Teamcenter® platform, including Teamcenter Express. You can easily capture Solid Edge data for re-use in future projects without placing an additional burden on the CAD user. The solution's full scalability enables companies to extend their cPDM environment to meet growing business demands.

Benefits

Integrate all of your technical data to provide a single source of product information that supports your complete design-through-manufacturing process

Spend less time finding the correct revisions of your Solid Edge data

Accelerate your product change and approval processes, reducing time-to-market

Facilitate consistent work processes across all data formats, reducing errors and rework

Improve collaboration within your organization and with customers and suppliers

The Solid Edge Embedded Client enables design information created in Solid Edge to be captured, controlled and shared in a single, highly secure cPDM environment. The SEEC's version management and access control capabilities ensure that the right people in your enterprise get the right information at the right time.

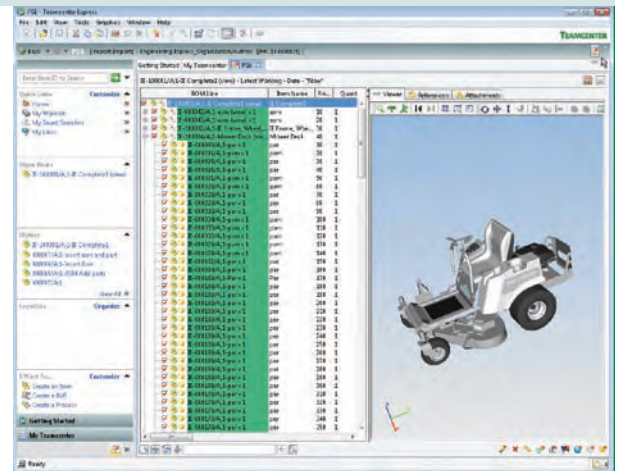
By using the SEEC, design teams can quickly search and access Solid Edge parts, assemblies and drawings eliminating time otherwise wasted trying to find and share design information. The SEEC also reduces the need for extensive change orders by ensuring that everyone is working from the latest design information.

The SEEC's capabilities go beyond workgroup CAD data management, enabling design teams at different locations and suppliers across your supply chain to leverage multi-site collaboration to facilitate communications and streamline your product development process.

Transparent user interface and synchronized releases

The SEEC provides seamless and transparent connectivity between Solid Edge and Teamcenter:

- Solid Edge dialogs that handle file operations, such as the File Open dialog, are enabled to directly browse Teamcenter vaults. Solid Edge documents are automatically filtered and displayed using Teamcenter attributes such as Item ID. An alternative bill of materials (BOM) view conveniently lists file dependencies within an assembly, as well as the relationships between the parts or assemblies and their associated drawings.



Features

Access Teamcenter and Teamcenter Express cPDM capabilities directly from Solid Edge

Create and edit Solid Edge parts, drawings and assemblies under Teamcenter control

Create and manage new revisions and versions of Solid Edge parts, drawings and assemblies

Automatically create lightweight JT visualization files for Solid Edge parts

Synchronize Solid Edge document properties with Teamcenter attributes

Facilitate integrated product structure management

Synchronized releases of Solid Edge and SEEC ensure that Teamcenter users can quickly move to the latest Solid Edge release.

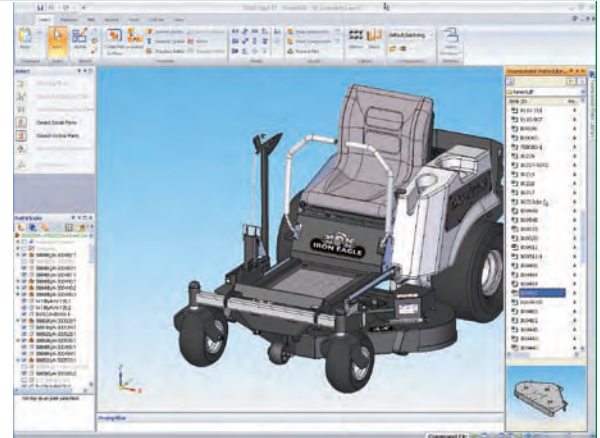
- The Solid Edge Assembly Pathfinder is enabled with an additional tab that displays a PDM view of your active Solid Edge documents. You can access a menu of available Teamcenter operations by right clicking on the Solid Edge documents displayed in the Pathfinder.

Supported Solid Edge documents include:

- Assemblies (.asm, .cfg)
- Parts (.prt)
- Drawings (.dft)
- Sheet metal (.psm)
- Wire harness (.cmp, .con)

Supported functions

- Access Teamcenter from Solid Edge and leverage the Teamcenter workspace and its functions, including Teamcenter's search and retrieve, graphical previews, where used, and check-in/check-out capabilities
- Save new documents to Teamcenter using Teamcenter business object rules for ID and revision
- Synchronize Solid Edge document properties with Teamcenter attributes
- Establish revision control for Solid Edge parts, assemblies and drawings and the associated design change and release processes
- Open Solid Edge documents with Teamcenter revision rules
- Copy and revise assemblies using the Solid Edge Structure Editor
- Determine check in/check out status and ownership of the parts in a Solid Edge assembly
- Search for and place components in a Solid Edge assembly
- Automatically generate and manage lightweight visualization (JT) files for Solid Edge 3D part and assembly models
- Capture non-Solid Edge documents linked to Solid Edge files (Microsoft Word and Excel, images)
- Use the add to Teamcenter capability to bulk-load existing Solid Edge data
- Automatically publish Solid Edge assembly structure to build and update Teamcenter's product structure.
- Manage links between Solid Edge parts and assemblies to their drawings, and to other referenced files
- Leverage Teamcenter FMS and SOA architecture for optimized performance in LAN and WAN environments



Support by both Teamcenter and Teamcenter Express

- *Teamcenter* powers innovation and productivity by connecting people and processes with knowledge. Teamcenter is the de facto standard for PLM deployments; it is backed by Siemens PLM Software's leadership in delivery.
- *Teamcenter Express* is a preconfigured yet extensible Teamcenter solution, designed to meet the needs of small manufacturing businesses. Teamcenter Express provides an entry point into the Teamcenter product suite that enables companies to easily expand the scope of their cPDM implementation by taking advantage of Teamcenter's proven scalability and comprehensive portfolio of applications.



► **Contact**
Siemens PLM Software
Americas 800 498 5351
Europe 44 (0) 1276 702000
Asia-Pacific 852 2230 3333
www.siemens.com/plm

SIEMENS